

# MONTHLY MEMBERSHIP PROGRESS REPORT

LOCATION MICHIGAN

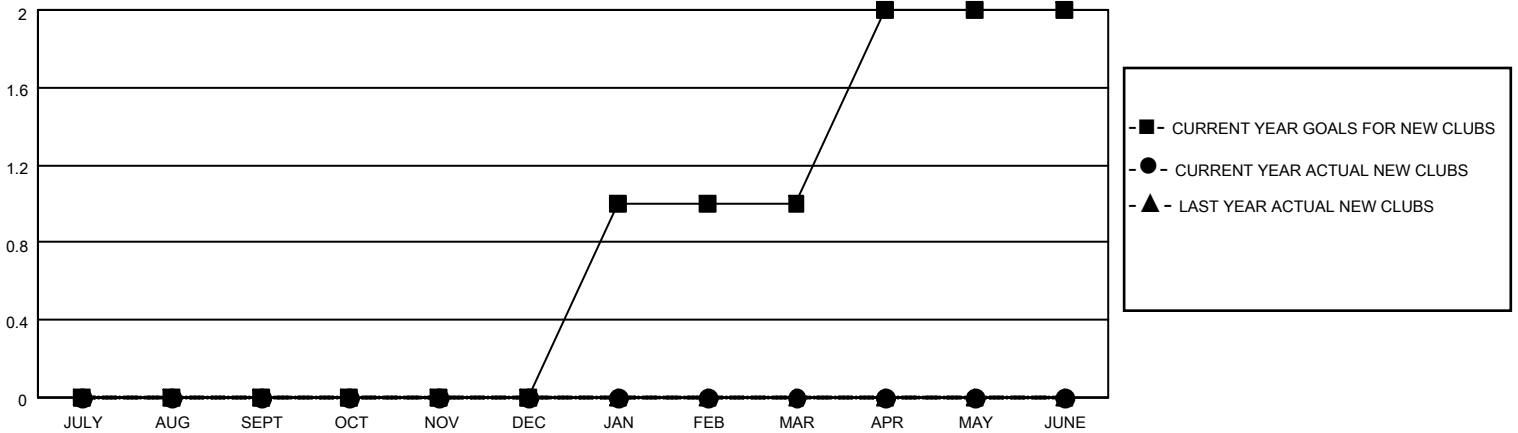
District 11 C1

Results as of: 9/30/2020

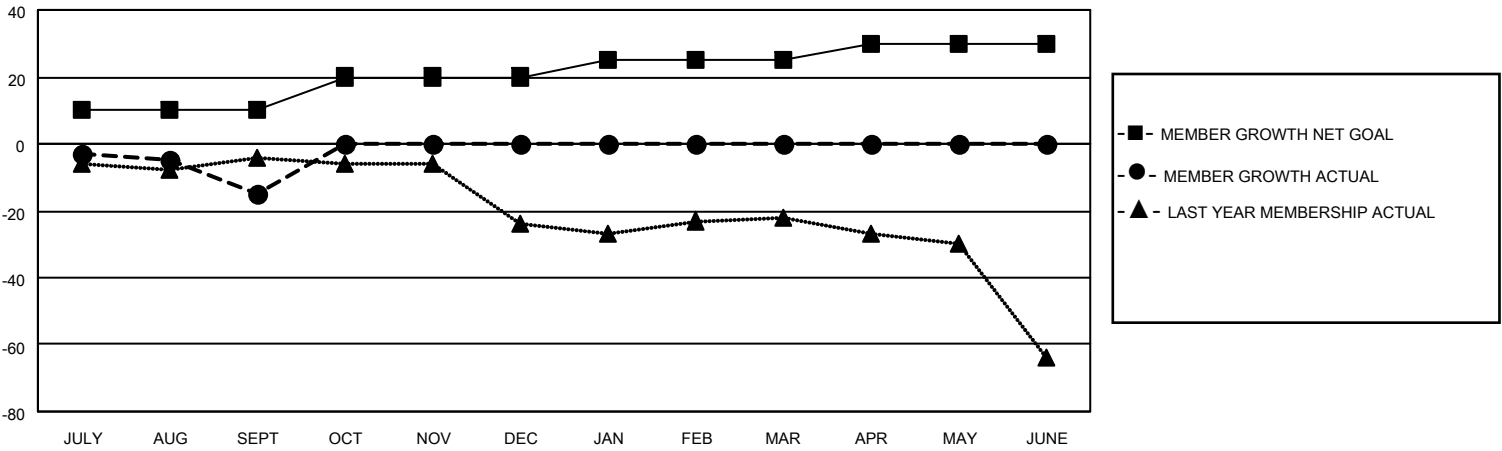
Clubs			
RESULTS FOR 2020-2021			
QUARTER	NEW CLUB GOAL	NEW CLUBS	DROPPED CLUBS
JULY/AUG/SEPT	0	0	0
OCT/NOV/DEC	0	0	0
JAN/FEB/MAR	1	0	0
APR/MAY/JUNE	1	0	0

Members			
RESULTS FOR 2020-2021			
QUARTER	MEMBER GROWTH NET GOAL	MEMBER GROWTH ACTUAL	DROPPED MEMBERS ACTUAL (including transfers)
JULY/AUG/SEPT	10	1	16
OCT/NOV/DEC	10	0	0
JAN/FEB/MAR	5	0	0
APR/MAY/JUNE	5	0	0

**GOALS AND ACTUAL NEW CLUBS CUMULATIVE**



**GOALS AND ACTUAL MEMBERS CUMULATIVE**



DROPPED CLUBS: 0	1 CLUBS OF 29 ADDED 1 OR MORE NEW MEMBERS	<u>GENDER DISTRIBUTION</u> MALE 502 (69.82%) FEMALE 217 (30.18%)
<u>DROPPED MEMBERS</u>	<a href="#">CLICK HERE FOR CUMULATIVE MEMBERSHIP DATA</a>	TOTAL FAMILY UNIT MEMBERS 138
DECEASED 2		FAMILY MEMBERS PAYING HALF DUES 70
CLUB CANCELLED 0		
OTHER 14		
<b>TOTAL 16</b>		